



**Water Monitoring Result at C1 - HKCEC Extension  
Mid-Flood Tide**

| Date    | Time  | Weather Condition | Sampling Depth |       | Water Temperature |       |         | pH    |         |       | Salinity |       | DO Saturation |       | DO      |       | Turbidity |       | Suspended Solids |       |         |       |    |       |
|---------|-------|-------------------|----------------|-------|-------------------|-------|---------|-------|---------|-------|----------|-------|---------------|-------|---------|-------|-----------|-------|------------------|-------|---------|-------|----|-------|
|         |       |                   |                |       | °C                |       |         | -     |         |       | ppt      |       | %             |       | mg/L    |       | NTU       |       | mg/L             |       |         |       |    |       |
|         |       |                   | m              | Value | Average           | Value | Average | Value | Average | Value | Average  | Value | Average       | Value | Average | Value | Average   | Value | Average          | Value | Average |       |    |       |
| 27/4/19 | 20:42 | Cloudy            | Middle         | 3.0   | 23.00             | 23.00 | 23.00   | 7.96  | 7.96    | 7.96  | 31.51    | 31.51 | 31.51         | 90.7  | 91.8    | 91.8  | 6.06      | 6.14  | 6.14             | 2.40  | 2.42    | 2.39  | 3  | 3.50  |
|         | 20:43 |                   | Middle         | 3.0   | 23.00             | 23.00 |         | 7.96  | 7.96    |       | 31.51    | 31.51 |               | 91.9  | 92.8    |       | 6.15      | 6.21  |                  | 2.38  | 2.35    |       | 4  |       |
| 30/4/19 | 15:00 | Cloudy            | Middle         | 3.0   | 25.80             | 25.80 | 25.85   | 7.42  | 7.42    | 7.44  | 29.51    | 29.51 | 29.51         | 99.7  | 98.8    | 96.9  | 6.86      | 6.80  | 6.75             | 1.76  | 1.76    | 1.75  | 4  | 3.50  |
|         | 15:02 |                   | Middle         | 3.0   | 25.90             | 25.90 |         | 7.46  | 7.46    |       | 29.51    | 29.51 |               | 92.0  | 96.9    |       | 6.68      | 6.67  |                  | 1.74  | 1.73    |       | 3  |       |
| 2/5/19  | 17:30 | Cloudy            | Middle         | 3.0   | 24.50             | 24.50 | 24.40   | 7.67  | 7.67    | 7.68  | 31.42    | 31.42 | 31.43         | 89.4  | 88.8    | 87.8  | 6.25      | 6.19  | 6.13             | 3.64  | 3.68    | 3.68  | 4  | 4.50  |
|         | 17:32 |                   | Middle         | 3.0   | 24.30             | 24.30 |         | 7.68  | 7.68    |       | 31.43    | 31.43 |               | 86.4  | 86.4    |       | 6.04      | 6.04  |                  | 3.69  | 3.70    |       | 5  |       |
| 4/5/19  | 5:45  | Cloudy            | Middle         | 2.5   | 23.40             | 23.40 | 23.40   | 7.67  | 7.67    | 7.67  | 31.41    | 31.41 | 31.41         | 88.7  | 89.7    | 88.6  | 6.36      | 6.39  | 6.32             | 5.62  | 5.80    | 5.70  | 6  | 6.00  |
|         | 5:46  |                   | Middle         | 2.5   | 23.40             | 23.40 |         | 7.67  | 7.67    |       | 31.41    | 31.41 |               | 88.1  | 88.0    |       | 6.27      | 6.27  |                  | 5.66  | 5.72    |       | 6  |       |
| 6/5/19  | 19:48 | Cloudy            | Middle         | 2.5   | 20.20             | 20.20 | 20.20   | 7.43  | 7.43    | 7.43  | 32.32    | 32.32 | 32.32         | 86.2  | 84.7    | 86.2  | 6.45      | 6.34  | 6.45             | 9.17  | 9.42    | 9.33  | 16 | 16.00 |
|         | 19:49 |                   | Middle         | 2.5   | 20.20             | 20.20 |         | 7.43  | 7.43    |       | 32.32    | 32.32 |               | 85.1  | 88.8    |       | 6.36      | 6.64  |                  | 9.37  | 9.35    |       | 16 |       |
| 8/5/19  | 19:34 | Cloudy            | Middle         | 2.5   | 21.60             | 21.60 | 21.60   | 7.60  | 7.60    | 7.60  | 31.41    | 31.41 | 31.41         | 93.3  | 91.8    | 92.3  | 6.85      | 6.74  | 6.77             | 11.39 | 11.42   | 11.31 | 8  | 7.50  |
|         | 19:35 |                   | Middle         | 2.5   | 21.60             | 21.60 |         | 7.60  | 7.60    |       | 31.41    | 31.41 |               | 90.4  | 93.6    |       | 6.60      | 6.87  |                  | 11.12 | 11.31   |       | 7  |       |
| 10/5/19 | 9:05  | Cloudy            | Middle         | 3.0   | 23.80             | 23.80 | 23.85   | 7.48  | 7.48    | 7.50  | 32.11    | 32.11 | 32.11         | 86.4  | 86.2    | 85.7  | 6.07      | 6.05  | 6.01             | 7.20  | 7.20    | 7.23  | 8  | 8.50  |
|         | 9:07  |                   | Middle         | 3.0   | 23.90             | 23.90 |         | 7.52  | 7.52    |       | 32.11    | 32.11 |               | 85.1  | 85.0    |       | 5.96      | 5.96  |                  | 7.21  | 7.30    |       | 9  |       |
| 14/5/19 | 14:45 | Fine              | Middle         | 3.0   | 26.60             | 26.60 | 26.65   | 7.36  | 7.36    | 7.38  | 31.28    | 31.28 | 31.28         | 95.5  | 95.7    | 95.4  | 6.42      | 6.43  | 6.41             | 2.97  | 2.97    | 2.96  | 6  | 6.00  |
|         | 14:47 |                   | Middle         | 3.0   | 26.70             | 26.70 |         | 7.40  | 7.40    |       | 31.28    | 31.28 |               | 94.9  | 95.3    |       | 6.37      | 6.40  |                  | 2.90  | 3.01    |       | 6  |       |
| 16/5/19 | 16:50 | Fine              | Middle         | 3.0   | 27.60             | 27.60 | 27.60   | 7.58  | 7.58    | 7.59  | 30.52    | 30.52 | 30.51         | 88.3  | 88.6    | 88.5  | 5.85      | 5.88  | 5.87             | 4.04  | 4.03    | 4.03  | <2 | <2    |
|         | 16:52 |                   | Middle         | 3.0   | 27.60             | 27.60 |         | 7.60  | 7.60    |       | 30.50    | 30.50 |               | 88.6  | 88.6    |       | 5.87      | 5.88  |                  | 4.03  | 4.03    |       | <2 |       |
| 18/5/19 | 19:00 | Fine              | Middle         | 3.0   | 26.30             | 26.30 | 26.33   | 7.50  | 7.50    | 7.52  | 29.87    | 29.87 | 29.87         | 97.0  | 97.2    | 96.9  | 6.55      | 6.56  | 6.50             | 4.03  | 4.00    | 3.98  | <2 | 3.00  |
|         | 19:02 |                   | Middle         | 3.0   | 26.30             | 26.40 |         | 7.54  | 7.54    |       | 29.87    | 29.87 |               | 96.9  | 96.6    |       | 6.45      | 6.43  |                  | 3.93  | 3.97    |       | 3  |       |
| 20/5/19 | 20:07 | Cloudy            | Middle         | 2.5   | 26.80             | 26.80 | 26.80   | 7.97  | 7.97    | 7.98  | 30.32    | 30.32 | 30.32         | 88.6  | 83.0    | 86.6  | 5.98      | 5.60  | 5.84             | 4.19  | 4.32    | 4.30  | 6  | 5.50  |
|         | 20:08 |                   | Middle         | 2.5   | 26.80             | 26.80 |         | 7.97  | 7.99    |       | 30.32    | 30.32 |               | 85.0  | 89.6    |       | 5.73      | 6.04  |                  | 4.43  | 4.26    |       | 5  |       |
| 22/5/19 | 20:28 | Cloudy            | Middle         | 3.0   | 24.90             | 24.90 | 24.90   | 7.81  | 7.81    | 7.84  | 30.96    | 30.96 | 30.96         | 89.5  | 89.8    | 89.9  | 6.21      | 6.23  | 6.24             | 4.18  | 4.16    | 4.11  | 5  | 4.50  |
|         | 20:29 |                   | Middle         | 3.0   | 24.90             | 24.90 |         | 7.87  | 7.87    |       | 30.96    | 30.96 |               | 90.0  | 90.3    |       | 6.25      | 6.27  |                  | 4.10  | 3.98    |       | 4  |       |
| 24/5/19 | 9:30  | Cloudy            | Middle         | 3.0   | 25.20             | 25.20 | 25.20   | 7.54  | 7.54    | 7.53  | 31.80    | 31.80 | 31.80         | 91.8  | 91.0    | 91.6  | 6.30      | 6.25  | 6.29             | 5.95  | 5.94    | 5.94  | 7  | 6.50  |
|         | 9:32  |                   | Middle         | 3.0   | 25.20             | 25.20 |         | 7.52  | 7.52    |       | 31.80    | 31.80 |               | 91.6  | 91.9    |       | 6.29      | 6.30  |                  | 5.93  | 5.93    |       | 6  |       |

Remarks:  
Single underline denotes exceedance over Action Level.  
Double underline denotes exceedance over Limit Level.



**Water Monitoring Result at RW21-P789 - GEC/CRB/SHK  
Mid-Flood Tide**

| Date    | Time  | Weather Condition | Sampling Depth<br>m | Water Temperature<br>°C |         | pH    |         | Salinity<br>ppt |         | DO Saturation<br>% |         | DO<br>mg/L |         | Turbidity<br>NTU |         | Suspended Solids<br>mg/L |         |      |      |      |      |      |    |       |
|---------|-------|-------------------|---------------------|-------------------------|---------|-------|---------|-----------------|---------|--------------------|---------|------------|---------|------------------|---------|--------------------------|---------|------|------|------|------|------|----|-------|
|         |       |                   |                     | Value                   | Average | Value | Average | Value           | Average | Value              | Average | Value      | Average | Value            | Average | Value                    | Average |      |      |      |      |      |    |       |
|         |       |                   |                     |                         |         |       |         |                 |         |                    |         |            |         |                  |         |                          |         |      |      |      |      |      |    |       |
| 27/4/19 | 20:53 | Cloudy            | Middle              | 4.0                     | 22.70   | 22.70 | 22.70   | 7.88            | 7.88    | 7.88               | 31.42   | 31.42      | 31.42   | 94.5             | 91.6    | 93.2                     | 6.35    | 6.15 | 6.26 | 1.16 | 1.18 | 1.16 | 4  | 4.00  |
|         | 20:54 |                   | Middle              | 4.0                     | 22.70   | 22.70 | 22.70   | 7.88            | 7.88    | 7.88               | 31.42   | 31.42      | 31.42   | 93.2             | 93.5    | 93.2                     | 6.26    | 6.28 | 6.26 | 1.19 | 1.11 | 1.16 | 4  |       |
| 30/4/19 | 15:35 | Cloudy            | Middle              | 4.0                     | 26.00   | 26.00 | 26.00   | 7.54            | 7.54    | 7.55               | 29.27   | 29.27      | 29.27   | 88.4             | 88.8    | 88.8                     | 6.08    | 6.10 | 6.07 | 1.85 | 1.87 | 1.87 | 4  | 3.50  |
|         | 15:37 |                   | Middle              | 4.0                     | 26.00   | 26.00 | 26.00   | 7.56            | 7.56    | 7.55               | 29.27   | 29.27      | 29.27   | 88.0             | 89.9    | 88.8                     | 6.05    | 6.04 | 6.07 | 1.88 | 1.88 | 1.87 | 3  |       |
| 2/5/19  | 17:50 | Cloudy            | Middle              | 4.0                     | 24.50   | 24.50 | 24.50   | 7.68            | 7.68    | 7.68               | 31.35   | 31.35      | 31.35   | 84.7             | 84.8    | 85.0                     | 5.93    | 5.93 | 5.95 | 3.31 | 3.34 | 3.34 | 4  | 4.50  |
|         | 17:52 |                   | Middle              | 4.0                     | 24.50   | 24.50 | 24.50   | 7.68            | 7.68    | 7.68               | 31.35   | 31.35      | 31.35   | 85.2             | 85.4    | 85.0                     | 5.96    | 5.98 | 5.95 | 3.36 | 3.36 | 3.34 | 5  |       |
| 4/5/19  | 6:18  | Cloudy            | Middle              | 3.5                     | 23.60   | 23.60 | 23.60   | 7.76            | 7.76    | 7.76               | 32.08   | 32.08      | 32.08   | 81.2             | 82.4    | 83.1                     | 5.74    | 5.83 | 5.87 | 9.42 | 9.43 | 9.47 | 8  | 8.00  |
|         | 6:20  |                   | Middle              | 3.5                     | 23.60   | 23.60 | 23.60   | 7.76            | 7.76    | 7.76               | 32.08   | 32.08      | 32.08   | 85.0             | 83.8    | 83.1                     | 6.01    | 5.90 | 5.87 | 9.54 | 9.47 | 9.47 | 8  |       |
| 6/5/19  | 20:28 | Cloudy            | Middle              | 3.5                     | 20.20   | 20.20 | 20.20   | 7.58            | 7.58    | 7.58               | 32.27   | 32.27      | 32.27   | 87.7             | 87.8    | 87.3                     | 6.56    | 6.57 | 6.54 | 8.75 | 8.73 | 8.71 | 13 | 13.50 |
|         | 20:29 |                   | Middle              | 3.5                     | 20.20   | 20.20 | 20.20   | 7.58            | 7.58    | 7.58               | 32.27   | 32.27      | 32.27   | 87.3             | 86.2    | 87.3                     | 6.59    | 6.45 | 6.54 | 8.69 | 8.65 | 8.71 | 14 |       |
| 8/5/19  | 22:00 | Cloudy            | Middle              | 3.5                     | 21.80   | 21.80 | 21.80   | 7.40            | 7.40    | 7.40               | 31.10   | 31.10      | 31.10   | 85.4             | 85.5    | 85.0                     | 6.26    | 6.26 | 6.23 | 7.26 | 7.28 | 7.22 | 8  | 7.50  |
|         | 22:01 |                   | Middle              | 3.5                     | 21.80   | 21.80 | 21.80   | 7.40            | 7.40    | 7.40               | 31.10   | 31.10      | 31.10   | 84.9             | 84.1    | 85.0                     | 6.22    | 6.16 | 6.23 | 7.15 | 7.20 | 7.22 | 7  |       |
| 10/5/19 | 9:15  | Cloudy            | Middle              | 4.0                     | 23.80   | 23.80 | 23.75   | 7.58            | 7.58    | 7.58               | 31.69   | 31.69      | 31.69   | 84.4             | 84.6    | 84.4                     | 5.96    | 5.97 | 5.96 | 5.15 | 5.18 | 5.17 | 7  | 6.50  |
|         | 9:17  |                   | Middle              | 4.0                     | 23.70   | 23.70 | 23.75   | 7.57            | 7.57    | 7.58               | 31.69   | 31.69      | 31.69   | 84.2             | 84.3    | 84.4                     | 5.94    | 5.95 | 5.96 | 5.19 | 5.17 | 5.17 | 6  |       |
| 14/5/19 | 13:50 | Fine              | Middle              | 4.0                     | 26.50   | 26.50 | 26.60   | 7.48            | 7.48    | 7.49               | 31.32   | 31.52      | 31.47   | 95.4             | 95.2    | 94.4                     | 6.41    | 6.39 | 6.32 | 2.38 | 2.37 | 2.37 | 5  | 5.00  |
|         | 13:52 |                   | Middle              | 4.0                     | 26.70   | 26.70 | 26.60   | 7.50            | 7.50    | 7.49               | 31.52   | 31.52      | 31.47   | 93.7             | 93.1    | 94.4                     | 6.25    | 6.24 | 6.32 | 2.36 | 2.37 | 2.37 | 5  |       |
| 16/5/19 | 15:20 | Fine              | Middle              | 4.0                     | 26.40   | 26.40 | 26.45   | 7.61            | 7.61    | 7.63               | 30.94   | 30.94      | 30.94   | 96.7             | 96.9    | 96.2                     | 6.53    | 6.54 | 6.49 | 4.42 | 4.37 | 4.41 | 2  | 2.50  |
|         | 15:22 |                   | Middle              | 4.0                     | 26.50   | 26.50 | 26.45   | 7.64            | 7.64    | 7.63               | 30.94   | 30.94      | 30.94   | 95.7             | 95.4    | 96.2                     | 6.46    | 6.44 | 6.49 | 4.42 | 4.41 | 4.41 | 3  |       |
| 18/5/19 | 17:00 | Fine              | Middle              | 4.0                     | 26.40   | 26.40 | 26.45   | 7.55            | 7.55    | 7.57               | 29.73   | 29.73      | 29.73   | 95.1             | 95.1    | 94.5                     | 6.47    | 6.46 | 6.43 | 2.98 | 2.99 | 3.00 | <2 | <2    |
|         | 17:02 |                   | Middle              | 4.0                     | 26.50   | 26.50 | 26.45   | 7.58            | 7.58    | 7.57               | 29.73   | 29.73      | 29.73   | 94.1             | 93.8    | 94.5                     | 6.39    | 6.39 | 6.43 | 3.01 | 3.02 | 3.00 | <2 |       |
| 20/5/19 | 21:02 | Cloudy            | Middle              | 3.5                     | 26.60   | 26.60 | 26.60   | 8.13            | 8.13    | 8.13               | 30.32   | 30.32      | 30.32   | 87.9             | 83.7    | 85.1                     | 5.95    | 5.67 | 5.76 | 4.86 | 4.80 | 4.78 | 5  | 5.00  |
|         | 21:03 |                   | Middle              | 3.5                     | 26.60   | 26.60 | 26.60   | 8.13            | 8.13    | 8.13               | 30.32   | 30.32      | 30.32   | 82.1             | 86.5    | 85.1                     | 5.55    | 5.85 | 5.76 | 4.71 | 4.74 | 4.78 | 5  |       |
| 22/5/19 | 22:20 | Cloudy            | Middle              | 3.5                     | 24.80   | 24.80 | 24.80   | 7.81            | 7.81    | 7.81               | 30.57   | 30.57      | 30.57   | 95.1             | 95.4    | 94.2                     | 6.63    | 6.65 | 6.56 | 2.41 | 2.27 | 2.27 | <2 | 2.00  |
|         | 22:21 |                   | Middle              | 3.5                     | 24.80   | 24.80 | 24.80   | 7.81            | 7.81    | 7.81               | 30.57   | 30.57      | 30.57   | 93.8             | 92.4    | 94.2                     | 6.54    | 6.41 | 6.56 | 2.18 | 2.21 | 2.27 | 2  |       |
| 24/5/19 | 9:45  | Cloudy            | Middle              | 4.0                     | 25.30   | 25.30 | 25.30   | 7.59            | 7.59    | 7.60               | 31.57   | 31.57      | 31.57   | 92.6             | 92.6    | 92.1                     | 6.36    | 6.36 | 6.33 | 4.37 | 4.38 | 4.34 | 5  | 4.50  |
|         | 9:47  |                   | Middle              | 4.0                     | 25.30   | 25.30 | 25.30   | 7.61            | 7.61    | 7.60               | 31.57   | 31.57      | 31.57   | 91.6             | 91.7    | 92.1                     | 6.29    | 6.29 | 6.33 | 4.29 | 4.31 | 4.34 | 4  |       |

Remarks:  
Single underline denotes exceedance over Action Level.  
Double underline denotes exceedance over Limit Level.



**Water Monitoring Result at C1 - HKCEC  
Mid-Ebb Tide**

| Date    | Time  | Weather Condition | Sampling Depth |     | Water Temperature |         |       | pH      |       |         | Salinity |         |       | DO Saturation |       |         | DO    |         |       | Turbidity |       |         | Suspended Solids |      |
|---------|-------|-------------------|----------------|-----|-------------------|---------|-------|---------|-------|---------|----------|---------|-------|---------------|-------|---------|-------|---------|-------|-----------|-------|---------|------------------|------|
|         |       |                   |                |     | °C                |         | -     |         | ppt   |         | %        |         | mg/L  |               | NTU   |         | mg/L  |         |       |           |       |         |                  |      |
|         |       |                   |                |     | Value             | Average | Value | Average | Value | Average | Value    | Average | Value | Average       | Value | Average | Value | Average | Value | Average   | Value | Average |                  |      |
| 27/4/19 | 8:00  | Cloudy            | Middle         | 3.5 | 25.10             | 25.10   | 25.10 | 7.58    | 7.58  | 7.59    | 30.85    | 30.85   | 30.86 | 96.3          | 95.5  | 95.4    | 6.67  | 6.61    | 6.61  | 3.44      | 3.35  | 3.38    | 5                | 5.00 |
|         | 8:02  |                   | Middle         | 3.5 | 25.10             | 25.10   |       | 7.59    | 7.59  |         | 30.86    | 30.86   |       | 94.8          | 95.1  |         | 6.57  | 6.58    |       | 3.36      | 3.38  |         | 5                |      |
| 30/4/19 | 19:57 | Cloudy            | Middle         | 3.0 | 24.80             | 24.80   | 24.80 | 8.02    | 8.02  | 8.02    | 29.26    | 29.26   | 29.26 | 89.9          | 93.3  | 91.5    | 6.32  | 6.55    | 6.43  | 2.21      | 2.26  | 2.20    | <2               | <2   |
|         | 19:58 |                   | Middle         | 3.0 | 24.80             | 24.80   |       | 8.02    | 8.02  |         | 29.26    | 29.26   |       | 93.1          | 89.6  |         | 6.54  | 6.29    |       | 2.17      | 2.15  |         | <2               |      |
| 2/5/19  | 11:45 | Cloudy            | Middle         | 2.5 | 24.40             | 24.40   | 24.35 | 7.52    | 7.52  | 7.54    | 31.06    | 31.06   | 31.06 | 87.3          | 87.0  | 87.0    | 6.10  | 6.09    | 6.09  | 1.77      | 1.76  | 1.75    | 4                | 3.50 |
|         | 11:47 |                   | Middle         | 2.5 | 24.30             | 24.30   |       | 7.56    | 7.56  |         | 31.06    | 31.06   |       | 87.0          | 86.5  |         | 6.09  | 6.06    |       | 1.76      | 1.70  |         | 3                |      |
| 4/5/19  | 11:55 | Cloudy            | Middle         | 3.0 | 24.00             | 24.00   | 24.00 | 7.44    | 7.44  | 7.45    | 31.68    | 31.68   | 31.68 | 94.0          | 94.1  | 93.9    | 6.60  | 6.60    | 6.59  | 7.95      | 7.94  | 7.98    | 6                | 7.00 |
|         | 11:27 |                   | Middle         | 3.0 | 24.00             | 24.00   |       | 7.45    | 7.46  |         | 31.68    | 31.68   |       | 93.6          | 93.7  |         | 6.57  | 6.58    |       | 8.00      | 8.02  |         | 8                |      |
| 6/5/19  | 12:00 | Cloudy            | Middle         | 3.0 | 24.40             | 24.40   | 24.40 | 7.47    | 7.47  | 7.48    | 32.17    | 32.17   | 32.17 | 95.5          | 95.5  | 94.7    | 6.64  | 6.64    | 6.58  | 6.82      | 6.82  | 6.82    | 8                | 7.50 |
|         | 12:02 |                   | Middle         | 3.0 | 24.40             | 24.40   |       | 7.48    | 7.48  |         | 32.17    | 32.17   |       | 94.0          | 93.7  |         | 6.52  | 6.51    |       | 6.81      | 6.81  |         | 7                |      |
| 8/5/19  | 11:55 | Cloudy            | Middle         | 3.0 | 22.80             | 22.80   | 22.80 | 7.62    | 7.62  | 7.64    | 32.53    | 32.53   | 32.53 | 92.2          | 92.0  | 91.9    | 6.57  | 6.56    | 6.56  | 7.97      | 7.97  | 7.96    | 7                | 7.50 |
|         | 11:57 |                   | Middle         | 3.0 | 22.80             | 22.80   |       | 7.65    | 7.65  |         | 32.53    | 32.53   |       | 91.7          | 91.7  |         | 6.55  | 6.55    |       | 7.96      | 7.94  |         | 8                |      |
| 10/5/19 | 16:00 | Cloudy            | Middle         | 3.0 | 24.90             | 24.90   | 24.95 | 7.42    | 7.42  | 7.43    | 31.21    | 31.21   | 31.21 | 91.6          | 91.6  | 91.3    | 6.33  | 6.33    | 6.31  | 4.19      | 4.19  | 4.21    | 8                | 7.50 |
|         | 16:02 |                   | Middle         | 3.0 | 25.00             | 25.00   |       | 7.43    | 7.43  |         | 31.21    | 31.21   |       | 90.3          | 91.6  |         | 6.25  | 6.34    |       | 4.23      | 4.21  |         | 7                |      |
| 14/5/19 | 20:10 | Cloudy            | Middle         | 3.0 | 26.20             | 26.20   | 26.20 | 7.98    | 7.98  | 7.98    | 31.87    | 31.87   | 31.87 | 81.3          | 84.4  | 83.1    | 5.15  | 5.35    | 5.27  | 4.05      | 4.08  | 4.01    | 8                | 7.50 |
|         | 20:11 |                   | Middle         | 3.0 | 26.20             | 26.20   |       | 7.98    | 7.98  |         | 31.87    | 31.87   |       | 81.6          | 85.2  |         | 5.18  | 5.40    |       | 4.00      | 3.89  |         | 7                |      |
| 16/5/19 | 11:50 | Fine              | Middle         | 2.5 | 27.30             | 27.30   | 27.35 | 7.35    | 7.35  | 7.38    | 31.19    | 31.19   | 31.19 | 98.1          | 98.3  | 97.8    | 6.52  | 6.53    | 6.50  | 6.29      | 6.26  | 6.24    | 6                | 5.50 |
|         | 11:52 |                   | Middle         | 2.5 | 27.40             | 27.40   |       | 7.40    | 7.40  |         | 31.18    | 31.18   |       | 97.8          | 97.0  |         | 6.49  | 6.44    |       | 6.19      | 6.20  |         | 5                |      |
| 18/5/19 | 12:50 | Fine              | Middle         | 2.5 | 26.90             | 26.90   | 26.95 | 7.35    | 7.35  | 7.37    | 29.77    | 29.77   | 29.77 | 92.5          | 91.7  | 91.9    | 6.24  | 6.19    | 6.20  | 2.17      | 2.27  | 2.24    | 3                | 2.50 |
|         | 12:52 |                   | Middle         | 2.5 | 27.00             | 27.00   |       | 7.39    | 7.39  |         | 29.77    | 29.77   |       | 91.7          | 91.7  |         | 6.19  | 6.19    |       | 2.27      | 2.24  |         | 2                |      |
| 20/5/19 | 13:25 | Fine              | Middle         | 3.5 | 27.50             | 27.50   | 27.55 | 7.61    | 7.61  | 7.61    | 29.87    | 29.87   | 29.88 | 88.1          | 89.0  | 89.3    | 5.88  | 5.93    | 5.96  | 2.55      | 2.55  | 2.55    | 4                | 4.50 |
|         | 13:27 |                   | Middle         | 3.5 | 27.60             | 27.60   |       | 7.61    | 7.61  |         | 29.88    | 29.88   |       | 90.1          | 90.1  |         | 6.01  | 6.01    |       | 2.54      | 2.54  |         | 5                |      |
| 22/5/19 | 13:15 | Fine              | Middle         | 2.5 | 26.80             | 26.80   | 26.80 | 7.51    | 7.51  | 7.53    | 30.64    | 30.64   | 30.65 | 98.8          | 98.9  | 98.6    | 6.65  | 6.66    | 6.64  | 4.89      | 4.88  | 4.86    | 4                | 4.00 |
|         | 13:17 |                   | Middle         | 2.5 | 26.80             | 26.80   |       | 7.53    | 7.57  |         | 30.65    | 30.65   |       | 98.3          | 98.3  |         | 6.62  | 6.61    |       | 4.87      | 4.79  |         | 4                |      |
| 24/5/19 | 15:30 | Cloudy            | Middle         | 2.5 | 25.60             | 25.60   | 25.65 | 7.60    | 7.60  | 7.62    | 31.92    | 31.92   | 31.92 | 93.2          | 92.6  | 92.7    | 6.36  | 6.31    | 6.31  | 5.66      | 5.65  | 5.65    | 5                | 4.50 |
|         | 15:32 |                   | Middle         | 2.5 | 25.70             | 25.70   |       | 7.63    | 7.63  |         | 31.91    | 31.91   |       | 92.2          | 92.9  |         | 6.28  | 6.27    |       | 5.65      | 5.65  |         | 4                |      |

Remarks:  
Single underline denotes exceedance over Action Level.  
Double underline denotes exceedance over Limit Level.



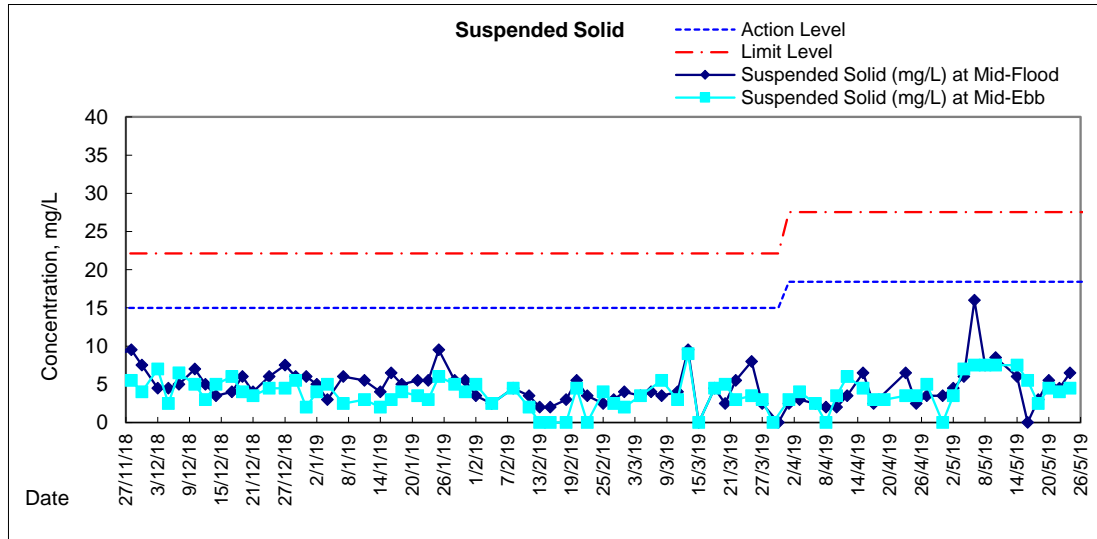
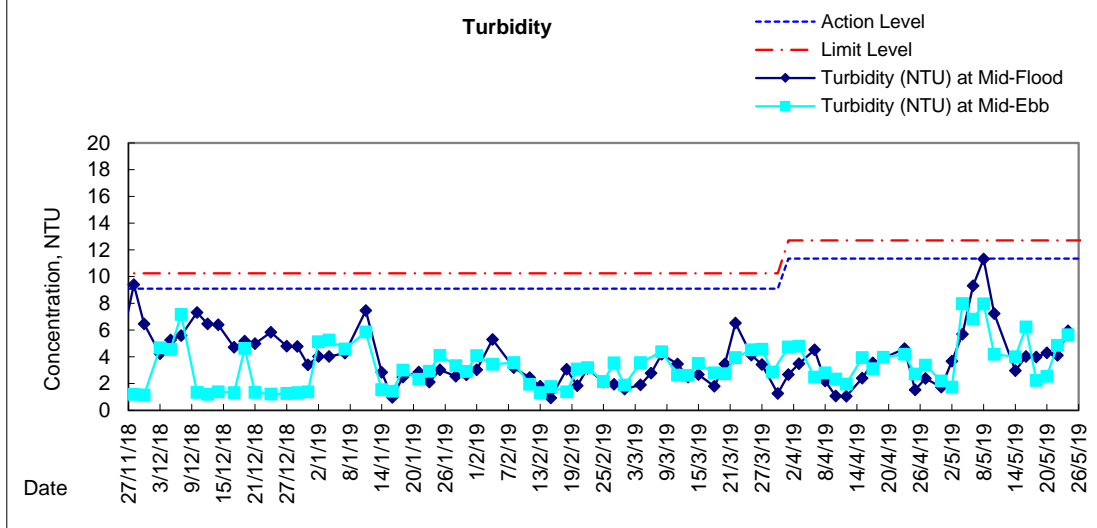
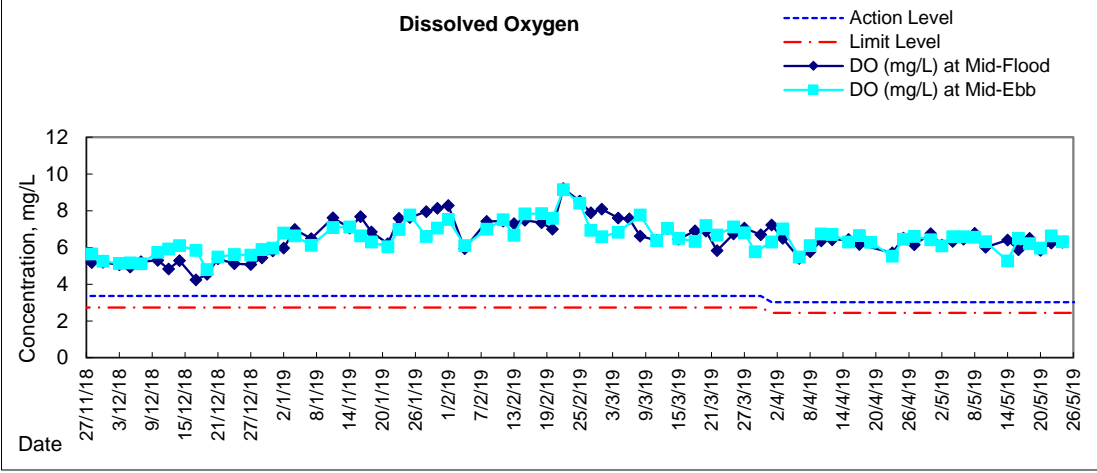
**Water Monitoring Result at RW21-P789 - GEC/CRB/SHK  
Mid-Ebb Tide**

| Date    | Time  | Weather Condition | Sampling Depth |     | Water Temperature |         |       | pH      |       |         | Salinity |         |       | DO Saturation |       | DO      |       | Turbidity |       | Suspended Solids |      |      |    |      |
|---------|-------|-------------------|----------------|-----|-------------------|---------|-------|---------|-------|---------|----------|---------|-------|---------------|-------|---------|-------|-----------|-------|------------------|------|------|----|------|
|         |       |                   |                |     | °C                |         | -     |         | ppt   |         | %        |         | mg/L  |               | NTU   |         | mg/L  |           |       |                  |      |      |    |      |
|         |       |                   |                |     | Value             | Average | Value | Average | Value | Average | Value    | Average | Value | Average       | Value | Average | Value | Average   | Value | Average          |      |      |    |      |
| 27/4/19 | 9:05  | Cloudy            | Middle         | 2.5 | 24.80             | 24.80   | 24.80 | 7.60    | 7.60  | 7.61    | 30.84    | 30.84   | 30.83 | 92.3          | 92.6  | 92.2    | 6.43  | 6.46      | 6.42  | 2.40             | 2.40 | 2.40 | 4  | 3.50 |
|         | 9:07  |                   | Middle         | 2.5 | 24.80             | 24.80   |       | 7.61    | 7.61  |         | 30.81    | 30.81   |       | 91.7          | 92.2  |         | 6.38  | 6.42      |       | 2.41             | 2.40 |      | 3  |      |
| 30/4/19 | 22:00 | Cloudy            | Middle         | 4.0 | 24.60             | 24.60   | 24.60 | 7.82    | 7.83  | 7.83    | 29.80    | 29.80   | 29.80 | 91.9          | 94.4  | 93.6    | 6.45  | 6.63      | 6.57  | 2.27             | 2.23 | 2.31 | 4  | 3.50 |
|         | 22:01 |                   | Middle         | 4.0 | 24.60             | 24.60   |       | 7.83    | 7.83  |         | 29.80    | 29.80   |       | 94.3          | 93.6  |         | 6.62  | 6.57      |       | 2.35             | 2.38 |      | 3  |      |
| 2/5/19  | 10:35 | Cloudy            | Middle         | 3.5 | 24.50             | 24.50   | 24.50 | 7.55    | 7.55  | 7.57    | 30.72    | 30.72   | 30.73 | 83.7          | 83.7  | 83.3    | 5.86  | 5.86      | 5.83  | 3.28             | 3.25 | 3.26 | 2  | 2.00 |
|         | 10:37 |                   | Middle         | 3.5 | 24.50             | 24.50   |       | 7.59    | 7.59  |         | 30.73    | 30.73   |       | 83.0          | 82.6  |         | 5.82  | 5.79      |       | 3.26             | 3.26 |      | 2  |      |
| 4/5/19  | 14:25 | Cloudy            | Middle         | 3.5 | 24.10             | 24.10   | 24.05 | 7.40    | 7.40  | 7.41    | 31.60    | 31.60   | 31.60 | 93.6          | 93.6  | 93.1    | 6.52  | 6.57      | 6.52  | 6.55             | 6.53 | 6.53 | 7  | 6.50 |
|         | 14:27 |                   | Middle         | 3.5 | 24.00             | 24.00   |       | 7.42    | 7.42  |         | 31.60    | 31.60   |       | 92.6          | 92.4  |         | 6.51  | 6.49      |       | 6.53             | 6.52 |      | 6  |      |
| 6/5/19  | 14:20 | Cloudy            | Middle         | 3.5 | 23.80             | 23.80   | 23.85 | 7.60    | 7.60  | 7.61    | 32.11    | 32.11   | 32.12 | 91.6          | 91.6  | 91.5    | 6.42  | 6.42      | 6.41  | 5.34             | 5.24 | 5.30 | 6  | 6.50 |
|         | 14:22 |                   | Middle         | 3.5 | 23.90             | 23.90   |       | 7.61    | 7.61  |         | 32.12    | 32.12   |       | 91.5          | 91.1  |         | 6.41  | 6.39      |       | 5.30             | 5.31 |      | 7  |      |
| 8/5/19  | 12:20 | Cloudy            | Middle         | 4.0 | 23.00             | 23.00   | 23.00 | 7.70    | 7.70  | 7.70    | 32.54    | 32.54   | 32.55 | 89.9          | 89.2  | 88.4    | 6.30  | 6.33      | 6.27  | 7.65             | 7.64 | 7.64 | 8  | 7.50 |
|         | 12:22 |                   | Middle         | 4.0 | 23.00             | 23.00   |       | 7.70    | 7.70  |         | 32.55    | 32.55   |       | 87.2          | 87.2  |         | 6.21  | 6.22      |       | 7.64             | 7.62 |      | 7  |      |
| 10/5/19 | 16:30 | Cloudy            | Middle         | 3.5 | 24.90             | 24.90   | 25.05 | 7.42    | 7.42  | 7.44    | 31.70    | 31.70   | 31.70 | 87.2          | 87.6  | 87.2    | 6.04  | 6.03      | 6.01  | 2.55             | 2.56 | 2.56 | 7  | 7.50 |
|         | 16:32 |                   | Middle         | 3.5 | 25.20             | 25.20   |       | 7.46    | 7.46  |         | 31.69    | 31.69   |       | 86.9          | 86.9  |         | 5.98  | 5.97      |       | 2.54             | 2.57 |      | 8  |      |
| 14/5/19 | 21:27 | Cloudy            | Middle         | 4.0 | 26.20             | 26.20   | 26.20 | 7.81    | 7.81  | 7.81    | 32.48    | 32.48   | 32.48 | 81.0          | 82.4  | 82.0    | 5.03  | 5.12      | 5.10  | 3.76             | 3.73 | 3.71 | 6  | 6.50 |
|         | 21:28 |                   | Middle         | 4.0 | 26.20             | 26.20   |       | 7.81    | 7.81  |         | 32.48    | 32.48   |       | 83.9          | 80.8  |         | 5.21  | 5.02      |       | 3.68             | 3.66 |      | 7  |      |
| 16/5/19 | 12:10 | Fine              | Middle         | 3.5 | 26.40             | 26.40   | 26.50 | 7.47    | 7.47  | 7.49    | 31.27    | 31.27   | 31.27 | 95.3          | 95.4  | 94.3    | 6.43  | 6.44      | 6.36  | 4.45             | 4.47 | 4.47 | 5  | 5.00 |
|         | 12:12 |                   | Middle         | 3.5 | 26.60             | 26.60   |       | 7.50    | 7.50  |         | 31.27    | 31.27   |       | 93.2          | 93.2  |         | 6.27  | 6.30      |       | 4.48             | 4.49 |      | 5  |      |
| 18/5/19 | 11:55 | Fine              | Middle         | 3.5 | 26.50             | 26.50   | 26.45 | 7.36    | 7.36  | 7.39    | 30.04    | 30.04   | 30.05 | 94.3          | 92.9  | 93.0    | 6.42  | 6.32      | 6.31  | 2.74             | 2.83 | 2.78 | 4  | 3.50 |
|         | 11:57 |                   | Middle         | 3.5 | 26.40             | 26.40   |       | 7.42    | 7.42  |         | 30.05    | 30.05   |       | 92.9          | 91.9  |         | 6.26  | 6.25      |       | 2.78             | 2.77 |      | 3  |      |
| 20/5/19 | 13:50 | Fine              | Middle         | 3.5 | 27.40             | 27.40   | 27.50 | 7.54    | 7.54  | 7.55    | 29.88    | 29.88   | 29.88 | 96.3          | 96.0  | 95.7    | 6.44  | 6.42      | 6.39  | 2.27             | 2.26 | 2.26 | 4  | 4.00 |
|         | 13:52 |                   | Middle         | 3.5 | 27.60             | 27.60   |       | 7.56    | 7.56  |         | 29.88    | 29.88   |       | 95.2          | 95.4  |         | 6.35  | 6.36      |       | 2.23             | 2.26 |      | 4  |      |
| 22/5/19 | 15:30 | Fine              | Middle         | 3.5 | 26.40             | 26.40   | 26.50 | 7.54    | 7.54  | 7.55    | 31.03    | 31.03   | 31.03 | 98.3          | 98.1  | 98.2    | 6.64  | 6.63      | 6.63  | 4.76             | 4.76 | 4.76 | <2 | 2.00 |
|         | 15:32 |                   | Middle         | 3.5 | 26.60             | 26.60   |       | 7.55    | 7.55  |         | 31.03    | 31.03   |       | 98.5          | 98.0  |         | 6.65  | 6.60      |       | 4.76             | 4.77 |      | 2  |      |
| 24/5/19 | 14:55 | Cloudy            | Middle         | 4.0 | 25.50             | 25.50   | 25.50 | 7.71    | 7.71  | 7.72    | 31.72    | 31.72   | 31.72 | 91.1          | 91.4  | 91.6    | 6.23  | 6.25      | 6.26  | 5.87             | 5.92 | 5.90 | 9  | 8.50 |
|         | 14:57 |                   | Middle         | 4.0 | 25.50             | 25.50   |       | 7.72    | 7.72  |         | 31.72    | 31.72   |       | 91.8          | 91.9  |         | 6.28  | 6.29      |       | 5.90             | 5.90 |      | 8  |      |

Remarks:  
Single underline denotes exceedance over Action Level.  
Double underline denotes exceedance over Limit Level.



### Graphic Presentation of Water Quality Result of C1 - HKCEC





# Graphic Presentation of Water Quality Result of RW21-P789 - GEC/CRC/SHK

